

TOP SILKSCREEN

ANALOG DEVICES DATE: 12-19-2018

DC2808A-4, LTC6561

RECEIVER TIA 4:1

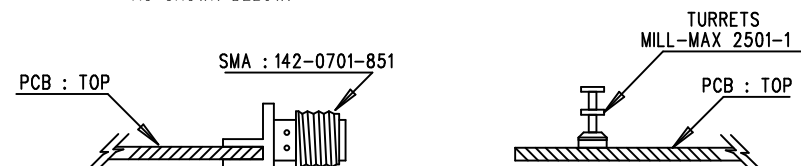
## NOTES: UNLESS OTHERWISE SPECIFIED

1. WORKMANSHIP SHALL BE IN ACCORDANCE WITH IPC-A-610.
2. ASSEMBLY PROCESS SHALL INCLUDE: REFLOW SOLDER TOP SIDE SMD. MAXIMUM SOLDER TEMPERATURE IS 240 DEGREES CELSIUS.
3. PARTS TO OMIT WILL BE SPECIFIED ON THE BILL OF MATERIALS. LOCATIONS OF OMITTED PARTS SHALL BE FREE OF SOLDER. MASK THE SOLDER STENCIL WHERE SMT PARTS ARE OMITTED.

4. INSTALL SHUNT AS SHOWN, DO NOT INSTALL JP1.

FOR JP1 INSTALL SHUNT JUMPER XJP1 BETWEEN PIN3-VCC - AND -PIN2

5. DEPANELIZE BOARDS AFTER ASSEMBLY AND ROUTE-OUT THE BREAKOUT TABS ON FOUR SIDES OF THE BOARD EDGE.
6. DO NOT APPLY ANY KIND OF ASSEMBLY STAMP OR QA STAMP TO ANY BOARD.
7. INSTALL SMA CONNECTORS AND TURRETS AS SHOWN BELOW:



UNLESS OTHERWISE SPECIFIED

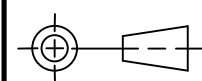
DIMENSIONS ARE IN INCHES

TOLERANCES:

0.XX" =  $\pm 0.01"$

0.XXX" =  $\pm 0.005"$

INTERPRET DIM AND TOL  
PER ASME Y14.5M-1994  
THIRD ANGLE PROJECTION



## APPROVALS

PCB DES. AK.

APP ENG. NOE Q.

SCALE = NONE



AHEAD OF WHAT'S POSSIBLE™

TITLE: ASSEMBLY DRAWING

RECEIVER TIA 4:1

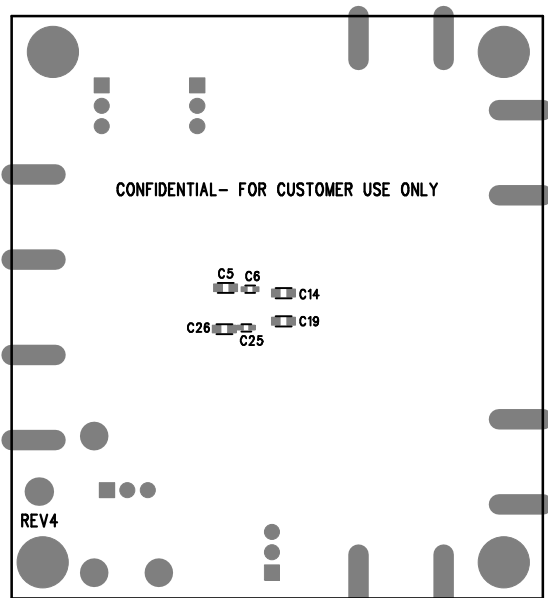
SIZE N/A IC NO. LTC6561  
DC2808A

FILENAME: DC2808A-4.PCB

1630 MCCARTHY BLVD  
MILPITAS, CA 95035  
PH: (408)432-1900  
CONFIDENTIAL-  
FOR CUSTOMER USE ONLY

REV 4

SHT 1 OF 1



RECEIVER TIA 4:1  
 DC2808A-4, LTC2801  
 ANALOG DEVICES 2532 DATE: 12-18-2018  
 BOTTOM SILKSCREEN

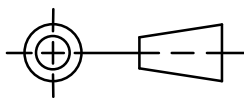
UNLESS OTHERWISE SPECIFIED

DIMENSIONS ARE IN INCHES  
 TOLERANCES:

0.XX" =  $\pm 0.01$ "

0.XXX" =  $\pm 0.005$ "

INTERPRET DIM AND TOL  
 PER ASME Y14.5M-1994  
 THIRD ANGLE PROJECTION



APPROVALS

PCB DES.	AK.
----------	-----

APP ENG.	NOE Q.
----------	--------

SCALE = NONE



AHEAD OF WHAT'S POSSIBLE™

TITLE: ASSEMBLY DRAWING

RECEIVER TIA 4:1

SIZE N/A	IC NO. LTC6561 DC2808A	REV 4
-------------	------------------------------	----------

FILENAME: DC2808A-4.PCB

SHT 1 OF 1

1630 MCCARTHY BLVD  
 MILPITAS, CA 95035  
 PH: (408)432-1900  
 CONFIDENTIAL-  
 FOR CUSTOMER USE ONLY